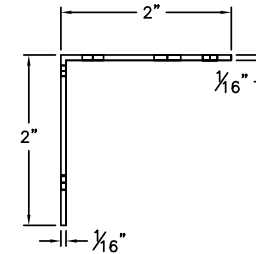
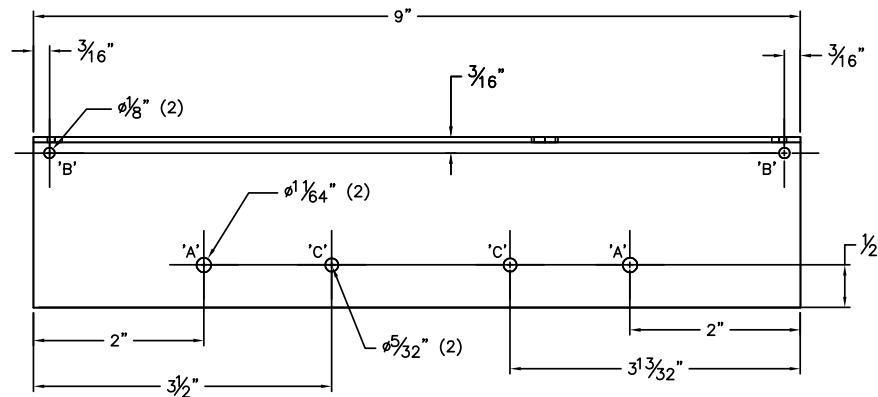
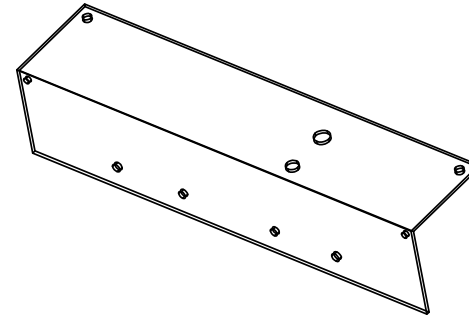
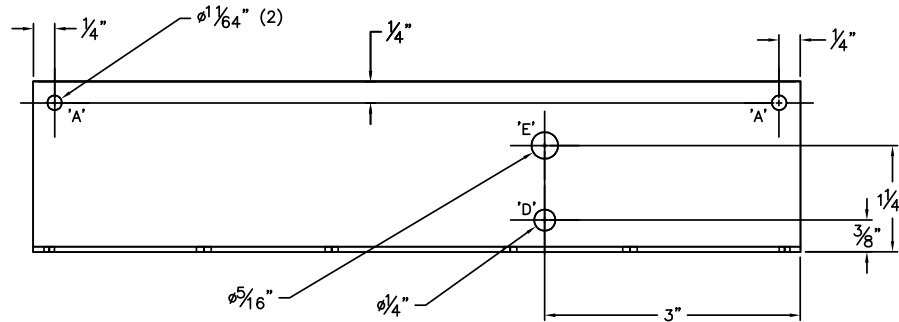


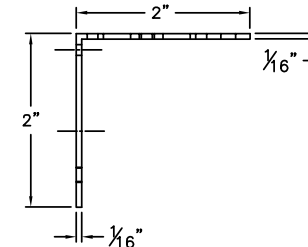
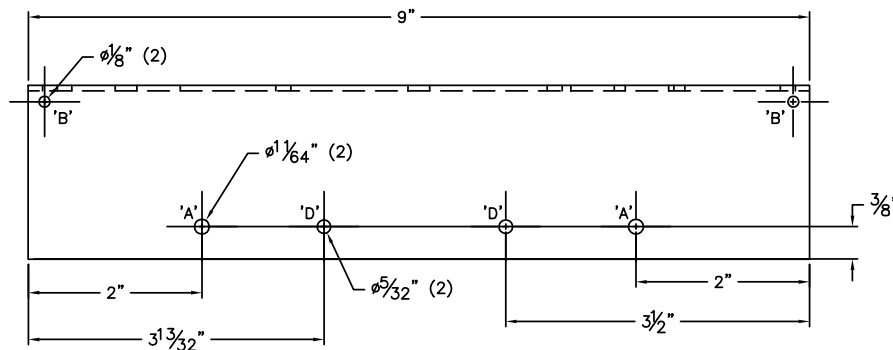
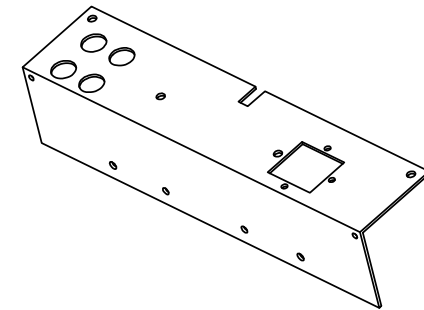
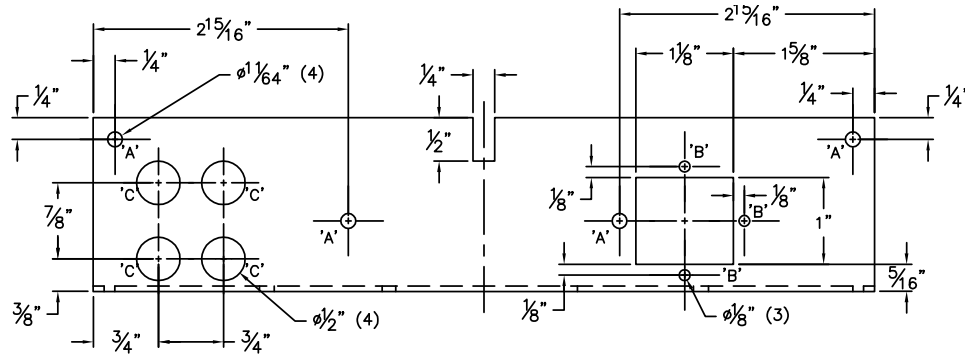
Mini Chip Amp Mechanical 1 of 4



- 'A' FRONT & BOTTOM ~ (1)
ALUM ANG. ~ 2 x 2 x 1/16 x 9"LG.
(4) 1/64" HOLES MARKED 'A'
(2) 1/8" HOLES MARKED 'B'
(2) 5/32" HOLES MARKED 'D'
(1) 1/4" HOLES MARKED 'D'
(1) 5/16" HOLES MARKED 'E'

RHERSH			
DATE	DRAWN	CHK	PROJECT
16JA10	RRT	RAH	MM #22
REV. #	SQUELETTE		
SHT. 1 OF 4			

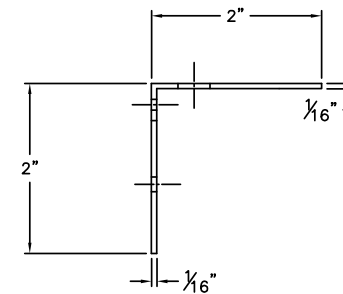
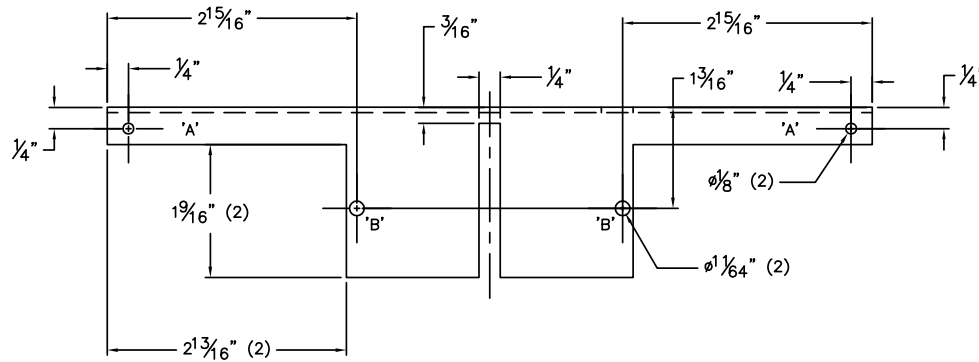
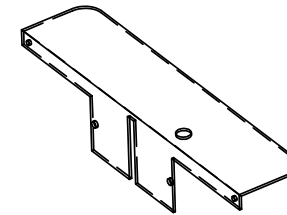
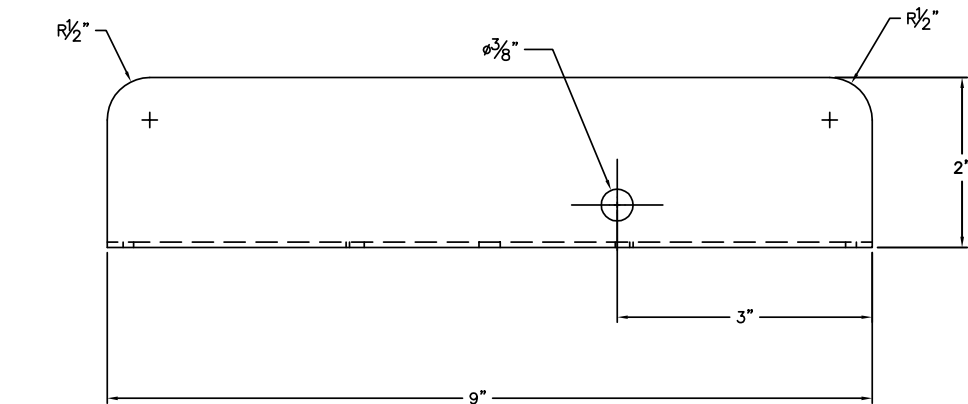
Mini Chip Amp Mechanical 2 of 4



'B' BACK & BOTTOM ~ (1)
ALUM ANG. ~ 2 x 2 x 1/16 x 9" LG.
(6) 1/64" HOLES MARKED 'A'
(5) 1/8" HOLES MARKED 'B'
(4) 1/2" HOLES MARKED 'C'
(2) 5/32" HOLES MARKED 'D'

RHERSH			
DATE	DRAWN	CHK	PROJECT
22JA10	RRT	RAH	MM #22
REV. #B	SQUELETTE		
SHT. 2 OF 4			

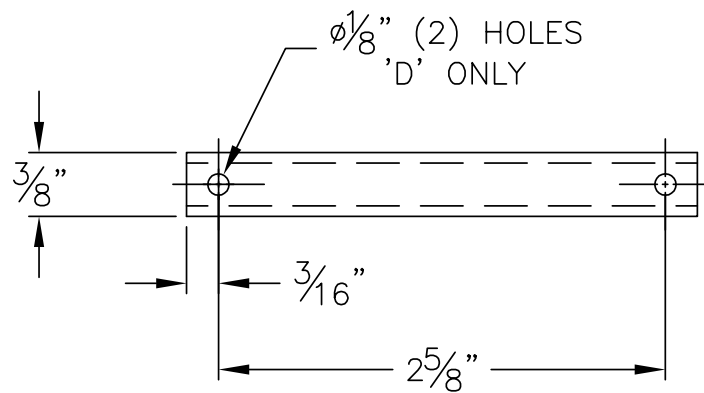
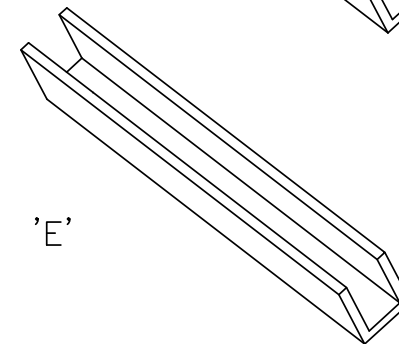
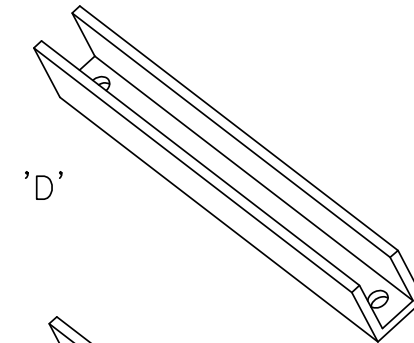
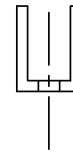
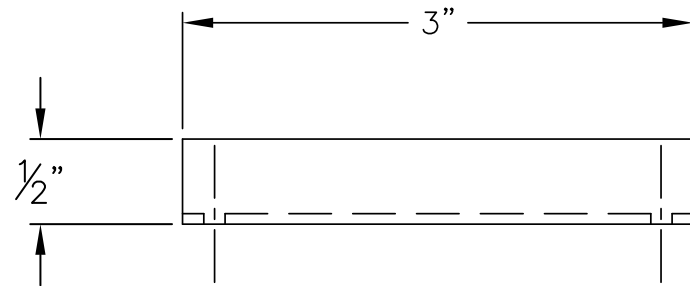
Mini Chip Amp Mechanical 3 of 4



'C' TOP & BACK ~ (1)
ALUM ANG. ~ 2 x 2 x 1/8 x 9"LG.
(2) 1/8 HOLES MARKED 'A'
(2) 1/4 HOLES MARKED 'B'
(1) 3/8 HOLE

RHERSH			
DATE	DRAWN	CHK	PROJECT
18JA10	RRT	RAH	MM #22
REV. #A	SQUELETTE		
SHT. 3 OF 4			

Mini Chip Amp Mechanical 4 of 4



SPACERS ~ (2) EACH
ALUM 'U' CHANNEL ~ $3/8$ " x $1/2$ " leg x 3"lg.

'D': WITH (2) $1/8$ " DIA. HOLES
'E': NO HOLES

RHERSH			
DATE	DRAWN	CHK	PROJECT
16JA10	RRT	RAH	MM #22
REV. #	SQUELETTE		
SHT. 4 OF 4			